

PRIMA LINEA PRODUCTIONS
PRESENTS



FESTIVAL DE CANNES
UN CERTAIN REGARD
2019 OFFICIAL SELECTION

THE
BEARS'
FAMOUS INVASION

CURRICULUM GUIDE
GRADES: 4-12

TABLE OF CONTENTS

Instructor Resources

A Letter to Educators	ii
Discussion Questions	iii
Interpretive Essay Prompts	iii
Image Analysis Activity Stills	iv
Additional Resources	vi
Standards	vi
About CFI	vi

Student Handouts

About the Film	1
Viewing Activities	2
About Film Festivals	8



Dear educators,

Thank you for attending the 44th Annual Mill Valley Film Festival's virtual screening of *The Bears' Famous Invasion*. This year, our film selections for school screenings continue to focus on increasingly relevant issues of global empathy and active citizenship, and we believe this film will be a powerful and engaging text to use in your classroom.

We know that this year is likely one of the most challenging of your professional career, and we hope that this film and study guide can support the incredible work you're already doing. These curricular materials are designed to get students to engage deeply with film by the common-core aligned skills of developing an evidence-based interpretation of a text.

The discussion questions on the following page offer a variety of options for fostering small-group or whole-class dialogue. If your students are already familiar with a process of writing evidence-based interpretive essays, consider using one of the suggested essay prompts for a short writing piece. Additionally, individual handouts for before, during, and after viewing are provided as stand-alone activities to be used individually or in sequence. There are also two full-page screenshots from the film which you may want to project before watching in conjunction with the Image Analysis student handout on page 2 to prepare your students for the film's unique visual style. Lastly, we have also included a handout that provides some context for the film festival experience, which may help to introduce your in-class screening.

Thank you so much for your tireless work!

Sincerely,

The CFI Education Team



CFI EDUCATION

DISCUSSION QUESTIONS

1. What are the main events that occur in this film? What has changed between the start and the end?
2. Does this film feel real? Why or why not?
3. What are the primary emotions you felt during this film? What are some secondary emotions?
4. Consider the editing and the tempo of this film. Did things move quickly or slowly? How come?
5. What do you see in this film that reminds you of other stories from your life or other stories you know?
6. Consider other films you've seen. What makes this film unique or important? What are some connections between this film and other films?
7. What was unique about the animation style of this film? What made it different from other animated films?
8. How were the bears different from the humans? How were they similar?
9. Was King Léonce a better leader than the Grand-Duc? Why or why not?
10. What did you notice about the use of color in this film? What colors were most prominent or memorable?
11. What was the purpose or effect of the story of the invasion being told by the travelling entertainers and the bear in the cave?

INTERPRETIVE ESSAY PROMPTS

1. What is this film suggesting about the relationship between humans and animals?
2. Was Léonce correct to be concerned about the influence of humans on Tonio?

IMAGE ANALYSIS:
IMAGE 1



© 2019 Prima Linea Productions - Pathé Films- France 3 Cinéma - Indigo Film

IMAGE ANALYSIS:
IMAGE 2



© 2019 Prima Linea Productions - Pathé Films - France 3 Cinéma - Indigo Film

ADDITIONAL RESOURCES

***The Bears' Famous Invasion of Sicily* Book Review**

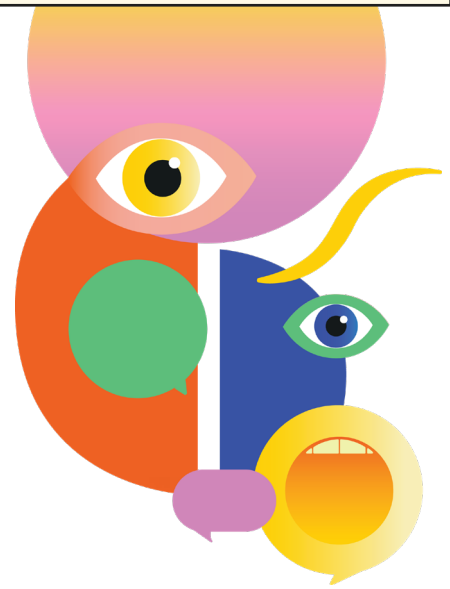
A review of the book upon which the film is based
<https://www.publishersweekly.com/978-1-59017-076-2>

Lorenzo Mattotti

The official website of director and illustrator Lorenzo Mattotti
Note: Some illustrations contain nudity and may not be appropriate for all age groups
<https://www.mattotti.com/>

Lorenzo Mattotti Instagram

The instagram profile of director and illustrator Lorenzo Mattotti
Note: Some illustrations contain nudity and may not be appropriate for all age groups
<https://www.instagram.com/lorenzomattotti>



STANDARDS

CCSS.ELA-LITERACY.RL.5.2

Determine a theme of a story, drama, or poem from details in the text, including how characters in a story or drama respond to challenges or how the speaker in a poem reflects upon a topic; summarize the text.

CCSS.ELA-LITERACY.RL.5.3

Compare and contrast two or more characters, settings, or events in a story or drama, drawing on specific details in the text (e.g., how characters interact).

CCSS.ELA-LITERACY.RL.7.6

Analyze how an author develops and contrasts the points of view of different characters or narrators in a text.

CCSS.ELA-LITERACY.RL.9-10.2

Determine a theme or central idea of a text and analyze in detail its development over the course of the text, including how it emerges and is shaped and refined by specific details; provide an objective summary of the text.

ABOUT CFI

The nonprofit California Film Institute celebrates and promotes film as art and education through year-round programming at the independent Christopher B. Smith Rafael Film Center, presentation of the acclaimed Mill Valley Film Festival and DocLands Documentary Film Festival, as well as cultivation of the next generation of filmmakers and audiences through CFI Education programs.

Follow the Mill Valley Film Festival on social media

 @millvalleyfilmfest  @MillValleyFilmFestival
 @mvfilmfest  californiafilminstitute #MVFF44

Name: _____



ABOUT THE FILM

In his feature debut, celebrated Italian illustrator Lorenzo Mattotti crafts a mesmerizing, visually stunning fairy tale about an epic clash between two worlds: those of bears and humans. Based on a classic 1945 Italian children’s book, the story inhabits a timeless mythic terrain, as the bear king Léonce leads his clan into the “valley of men” in search of his lost son. Thus begins an exciting, upbeat adventure—with snowy battles, giant monsters, an evil duke, a hapless magician, power and prejudice, surprising betrayals, and unexpected kindness. Bold, impressionistic animation brings it all to life: sculpted mountains, bristly forests, corrugated seas, chunky bears, and beanpole humans are rendered in brilliant, vivid blocks of color. Imbuing his tale with gentle lessons about goodness, judgment, and tolerance, Mattotti leaves us wishing for more time to linger in this lovely, bittersweet fantasy, and to appreciate the beauty in every frame.

BEFORE VIEWING: IMAGE ANALYSIS

Directions:

Look closely at the following screenshots taken from the film and explore the film's visual style. Record five observations about the image and write a short prediction of what story could be taking place in the image.



OBSERVE

What details do you notice in this image? List five.

PREDICT

What could be the story taking place in this image?



OBSERVE

What details do you notice in this image? List five.

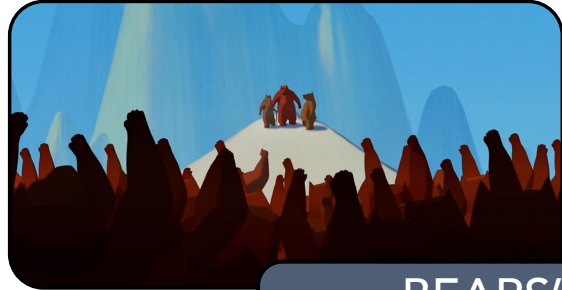
PREDICT

What could be the story taking place in this image?

DURING VIEWING: EVENT TRACKER

Directions:

Use this graphic organizer to track the events in this conflict between the bears and the humans and compare how each group views those events. In the middle column, periodically write down a key event in the film. In the left column, record the significance of that event as the humans see it, and in the right, record the significance of that event as the bears see it.



HUMANS'
PERSPECTIVE

KEY EVENT

BEARS'
PERSPECTIVE

Empty box for recording the human perspective of the event.

Empty box for recording the key event.

Empty box for recording the bear perspective of the event.

Empty box for recording the human perspective of the event.

Empty box for recording the key event.

Empty box for recording the bear perspective of the event.

Empty box for recording the human perspective of the event.

Empty box for recording the key event.

Empty box for recording the bear perspective of the event.

Empty box for recording the human perspective of the event.

Empty box for recording the key event.

Empty box for recording the bear perspective of the event.

DURING VIEWING: EVENT TRACKER

HUMANS'
PERSPECTIVE

KEY EVENT

BEARS'
PERSPECTIVE

--	--	--

--	--	--

--	--	--

--	--	--

--	--	--

DURING VIEWING: CHARACTER TRACKER

Directions:

Use this organizer to track the different characters and their personalities. For each character on the chart, record 2-3 **traits**: adjectives that describe their personality. Then, cite **evidence**: a sentence describing something they did in the film that demonstrates the traits you picked to describe them.



LÉONCE

TRAITS	EVIDENCE



GRAND DUC

TRAITS	EVIDENCE



TONIO

TRAITS	EVIDENCE



ALMERINA

TRAITS	EVIDENCE



THÉOPHILE

TRAITS	EVIDENCE

AFTER VIEWING: RESPONSE QUESTIONS

Directions:

Respond to each question, referring to specific scenes, events, and dialogue from the film as evidence for your interpretation.

1. What events in the film had the biggest effect on Tonio’s life? How did they impact him?

2. What do you think was the purpose of the “frame narrative,” the fact that the story of the bears’ invasion is narrated by the travelling entertainers and the elderly bear? What did these characters add to the film?

3. What could the film be suggesting about the relationship between the human and animal kingdoms?

4. What did you notice about the film’s visual style? How was the art unique or different from other animated films you have seen? Do you think this style was effective?

5. Write a short paragraph imagining what might happen in Tonio’s life after the events in the film.

ABOUT FILM FESTIVALS



An opening night screening at the Mill Valley Film Festival.

©Tommy Lau

What is a film festival?

A film festival is an event in which multiple movies are presented over the course of one or several days. Depending on the size of the festival, all of the screenings may take place in a single theater or may involve multiple venues throughout a city. Festivals also include special events like panel discussions with filmmakers and actors. Typically, filmmakers submit their works to a festival, where a team of curators selects the best entries for inclusion in the festival. For independent and international filmmakers, festivals are often an important way to raise awareness of a film, generate an audience, and/or attract a studio to purchase the rights to distribute a film in a wider release. Acceptance into a major festival can add significant prestige to a film, with some festival awards (such as the Cannes Film Festival's Palme d'Or) considered among the highest honors a film can receive.

There are many film festivals through-

out the world, with some focusing on particular themes, such as highlighting LGBTQ films/filmmakers, specific cultural groups, or particular genres. While some of the more famous festivals may be in distant locations, there are hundreds of small festivals spread through every corner of the world and, increasingly, festivals are using streaming access to make it easier for the public to view their curated programs.

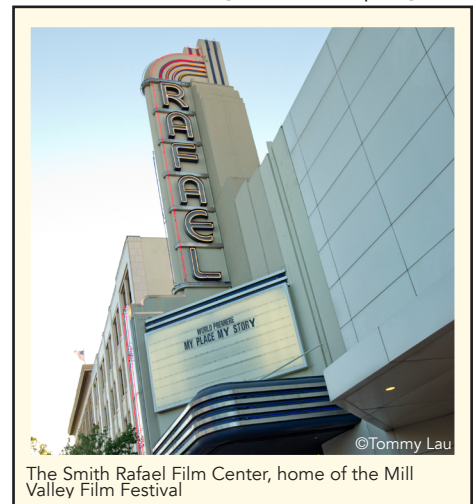
History of the Mill Valley Film Festival

Since founding the Mill Valley Film Festival in 1977, Executive Director Mark Fishkin has shepherded this once small, three-day showcase into an eleven-day, internationally acclaimed cinema event presenting a wide variety of new films from around the world in an engaged, community setting.

The festival has an impressive track record of launching new films and new filmmakers, and has earned a reputation as a filmmakers' festival

by celebrating the best in American independent and foreign films, alongside high-profile and prestigious award contenders. The relaxed and non-competitive atmosphere surrounding MVFF, gives filmmakers and audiences alike the opportunity to share their work and experiences in a collaborative and convivial setting.

Each year the festival welcomes more than 200 filmmakers, representing more than 50 countries. Screening sections include world cinema, US cinema, documentaries, family films, and shorts programs. Annual festival initiatives include Active Cinema, a forum for films that aim to engage audiences and transform ideas into action; Mind the Gap, a platform for inclusion and equity; and ¡Viva el Cine!, a showcase of Latin American and Spanish-language films. Festival guests also enjoy an exciting selection of Tributes, Spotlights and Galas throughout the program.



©Tommy Lau

The Smith Rafael Film Center, home of the Mill Valley Film Festival

Questions to Consider:

1. What is the purpose of a film festival? What are the benefits for filmmakers? For the audience? For the community?
2. How might the films at a festival differ from the films available to watch at your local movie theater?
3. What qualities do you think festival curators might look for in a film? If you are watching a festival film with a class/school group, what aspects of the film do you think made it appealing to the curators?

Get Involved!

Many film festivals, including the Mill Valley Film Festival, have student film categories. If you are a filmmaker, explore FilmFreeway (www.filmfreeway.com) for a database of worldwide film festivals where you can submit your film. The call for entries for MVFF opens in late February and closes in June. Youth filmmakers do not have to pay an entry fee. MVFF also offers many opportunities for volunteering. Find out more at <https://www.cafilm.org/volunteer/>.